

Intercultural Competent Educator

*Developing Adult Trainers' skills to manage
heterogeneous groups*

2021-1-EL01-KA122-ADU-000018137



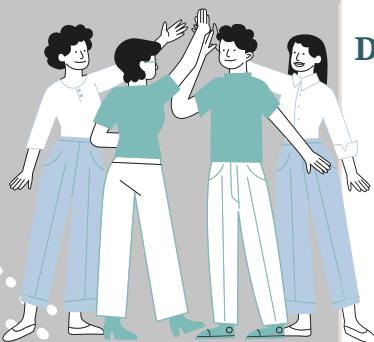
Assumes that every class has culture influence

Learners come from diverse
backgrounds and hold
different values



Doesn't idealize their own national background

Is always aware of nationalism
and stereotypes in the classroom
and materials



Doesn't tolerate any forms of discrimination

Recognizes and discourages any
expression of racism, sexism,
homophobia, etc. in and out of
their classrooms

Designs lessons based on innovative educational approaches

Uses inclusive and cooperative
learning as well as many engaging
activities

